



**GOLDSTORM**

METALS CORP

**A NEW PRECIOUS METALS EXPLORER  
IN BRITISH COLUMBIA'S GOLDEN TRIANGLE**

TSX.V: GSTM | OTC: GSTMF | FRA: B2U

May 2024

*No stock exchange, securities commission or other regulatory authority has approved or disapproved the information contained in this presentation. This presentation includes certain “forward-looking statements”. All statements other than statements of historical fact, included in this presentation, including without limitation statements regarding potential mineralization exploration results, and future plans and objectives of GOLDSTORM METALS, are forward looking statements that involve various risks and uncertainties. There can be no assurance that forward looking statements will prove to be accurate and actual results and future events could differ materially from those anticipated in such statements. Important factors that could cause actual results to differ materially from GOLDSTORM METAL’s expectations include, among others, the actual results of current exploration activities, uncertainties relating to the interpretation of drill results, other exploration data and the geology, grade and continuity of mineral deposits, and changes in project parameters as plans continue to be refined as well as future commodity prices. Although GOLDSTORM METALS has attempted to identify important factors that could cause actual results to differ materially, there may be other factors that cause results not to be as anticipated, estimated or intended. There can be no assurance that such statements will prove to be accurate as actual results and future events could differ materially from those anticipated in such statements. Accordingly, readers should not place undue reliance on forward looking statements. Refer also to the section entitled “Cautionary Note Regarding Forward-Looking Statements” in “Legal Notice” on GOLDSTORM METAL’s website ([www.goldstormmetals.com](http://www.goldstormmetals.com)).*

*The Qualified Person for this presentation for the purposes of National Instrument 43-101 is the Company’s Vice President Project Development, **Ken Konkin, P.Geo.** has read and approved the scientific and technical information that forms the basis for the disclosure contained in this corporate presentation.*

Opportunity for investors to participate in an **underexplored region** of a prolific mineral trend hosting over 100 million ounces of gold and 18 billion pounds of copper;

Major investors hold 44% of outstanding shares including **Eric Sprott and Skeena Resources**;

**Management success** within the region includes:

- Discovery of the Valley of the Kings – (Brucejack Mine, Newcrest Mining);
- Snowfields Deposit, now known as East Mitchell (Seabridge Gold)
- Goldstorm Deposit at Treaty Creek (Tudor Gold)

**Completed 2023 exploration** program at the Electrum Property with 11 holes (2,580 meters) drilled returning both wide bulk-tonnage and high-grade gold-silver intercepts.



## Equity Structure

(March 2024)

Shares Issued: 76.012MM

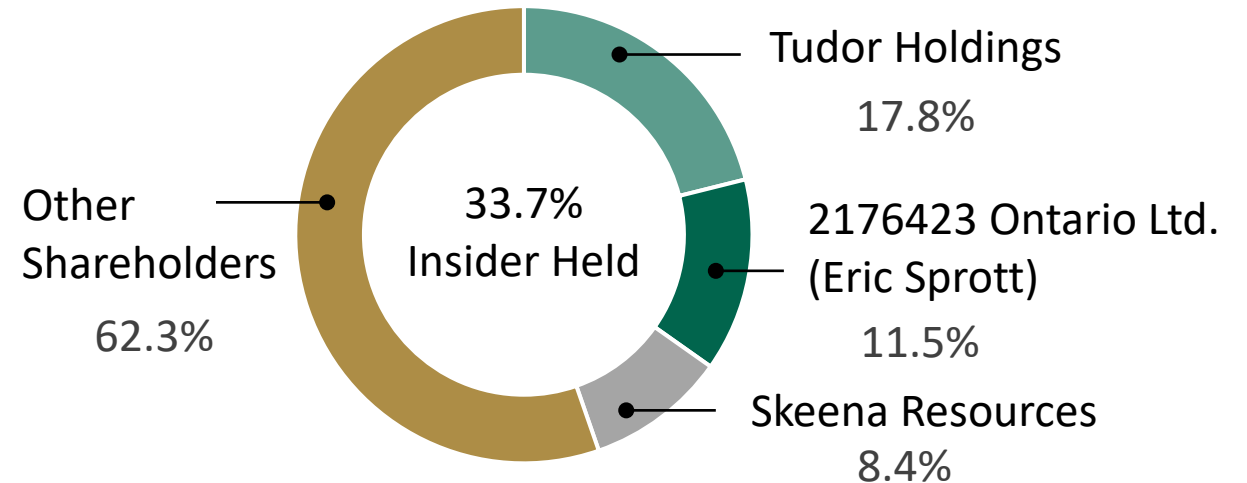
Options: 6.550MM

Warrants: 21.033MM

Fully Diluted: 103.595MM

Market Cap.: \$11.4 million (@ \$0.17)

## Equity Ownership



## Management & Directors

Ken Konkin – President & CEO, Director  
Scott Davis – Chief Financial Officer  
Natalie Senger – VP Project Dev., Director  
Chris Curran – Head of Corporate Development

Helmut Finger – Director  
Ronald-Peter Stoeferle – Director  
Jeff Rowe – Director



## Location: 'Golden Triangle' of British Columbia

- South of Newmont's Brucejack Mine and Seabridge Gold's KSM deposits
- North of the historic Premier (Ascot Resources) and Scottie Gold Mine



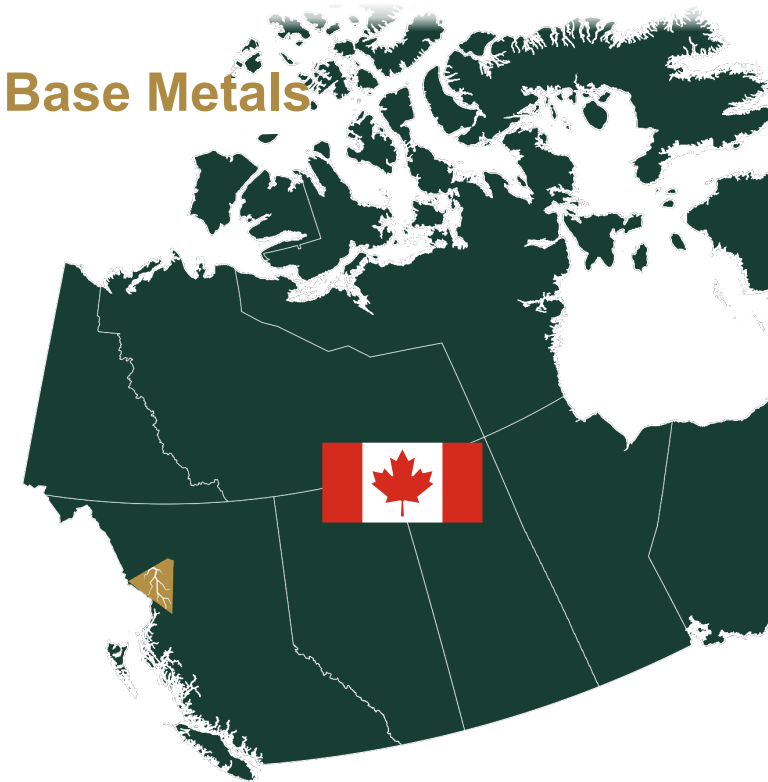
## Exploration Potential: Gold, Silver + Base Metals

- Porphyry style
- Epithermal
- Volcanogenic massive sulphide (VMS)

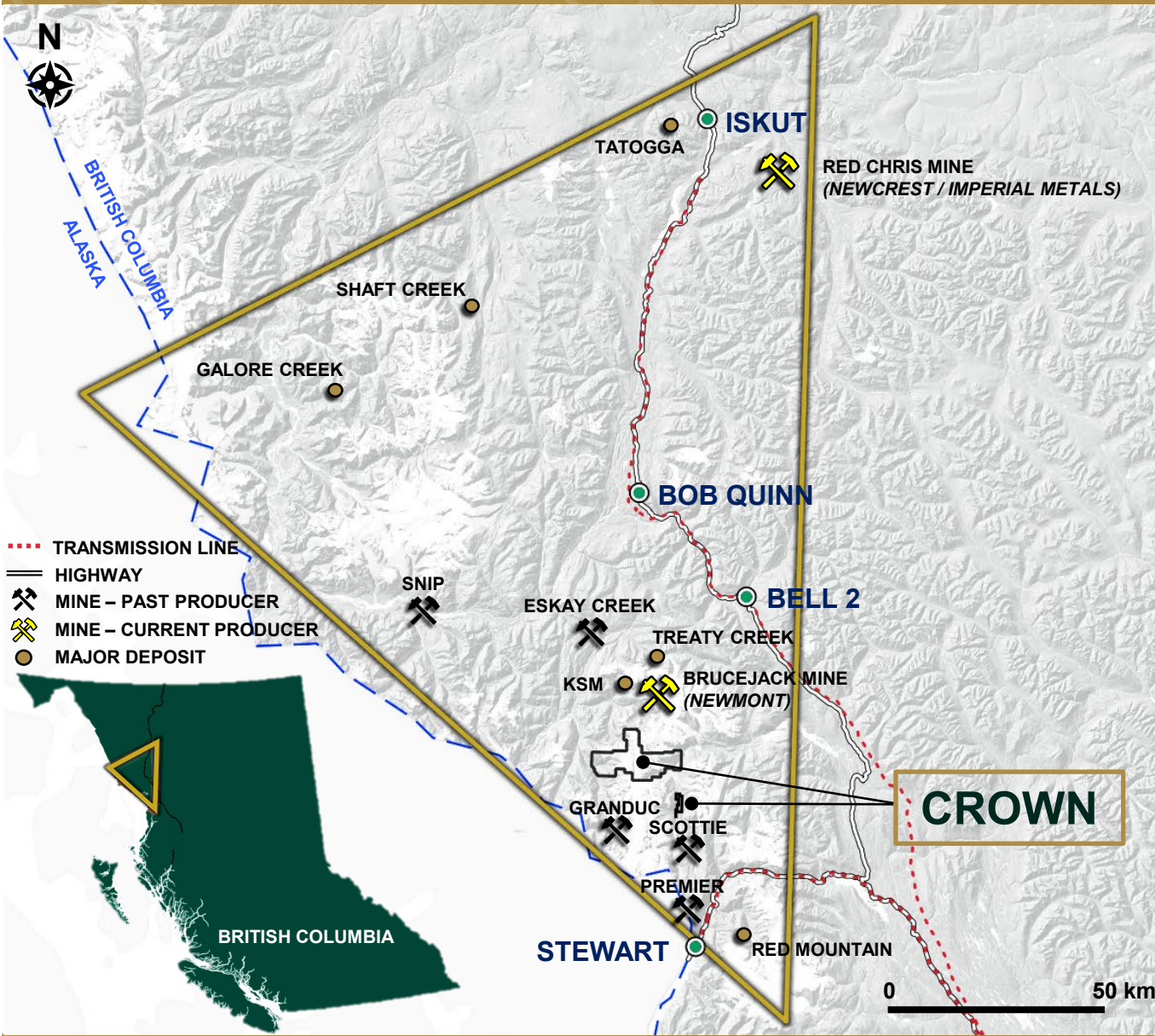


## Exploration History: Underexplored

- Intermittent surface exploration
- Few geophysical surveys
- Shallow diamond drilling
- Bulk sample

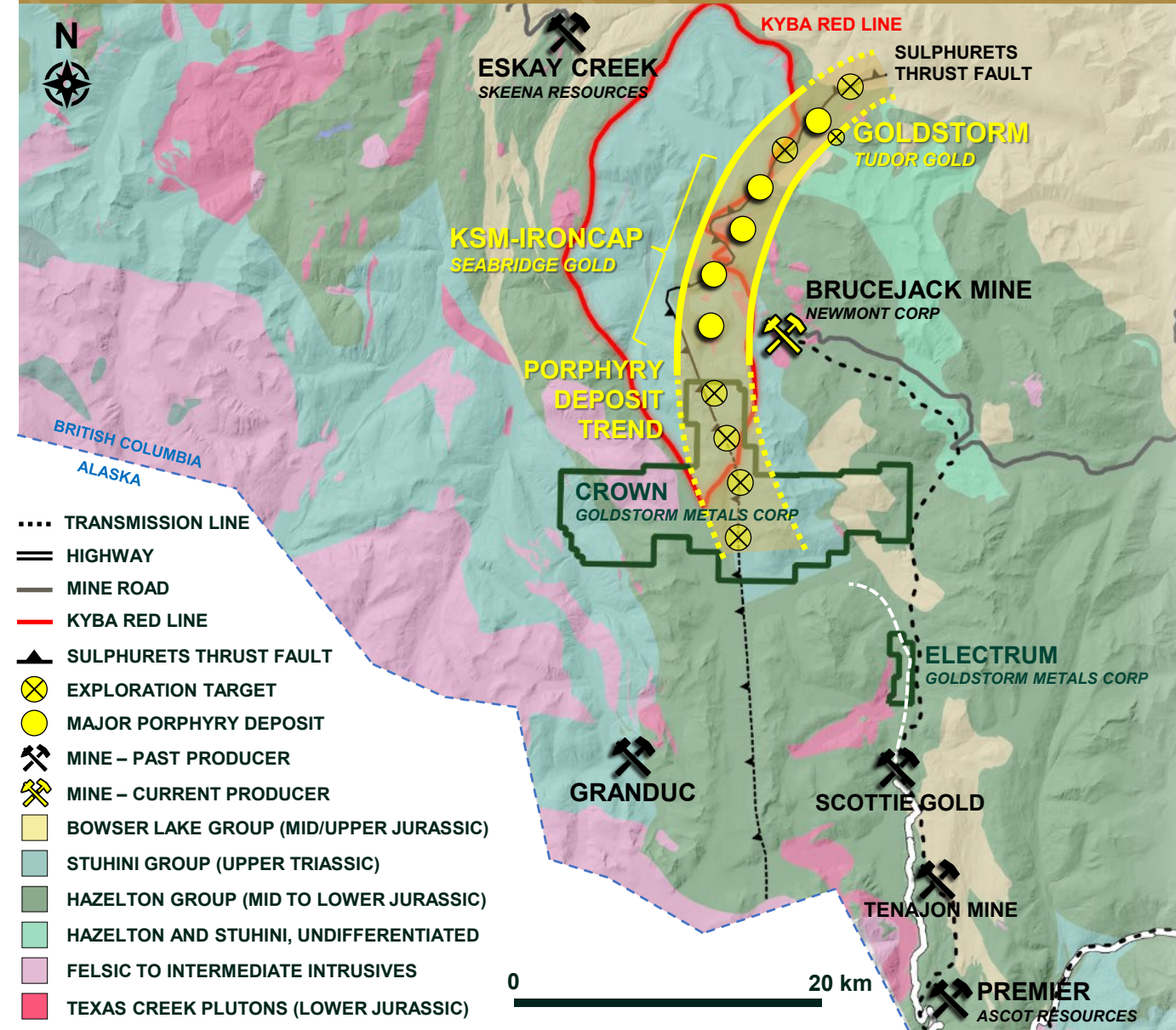


# Regional Setting & Infrastructure



- Location:** 45 kilometers from Stewart, BC. Road access to Electrum claims.
- Water:** Accessible water sources for drilling and exploration.
- Power:** Northwest transmission line parallels highway 37, from Terrace to the Red Chris Mine. Transmission line to Stewart.
- Air Access:** Commercial airports in Smithers and Terrace within 350 km. Airstrip in Stewart.
- Export Facilities:** Deep water ocean port facilities in Stewart for export of mineral concentrates.

# The Right Geology



Crown claims are underlain by the same aged geological units that host the majority of the deposits in the Golden Triangle; Stuhini and Hazelton group with various intrusions.

The Sulphurets thrust fault, a major regional structure associated with Seabridge Gold and Tudor Gold’s large copper-gold porphyry deposits, extends through Crown.

The central portion of Crown has been largely unexplored. Potential for porphyries associated with large scale faulting below the surface, such as at Tudor Gold’s porphyry system, the Goldstorm Deposit.

Hazelton group volcanoclastics, Texas suite plutonic rocks and high-grade gold-silver epithermal veins at Electrum (lower Crown claims) parallel the geology of the Brucejack mine.

**16,469 HECTARES**

**100% OWNERSHIP**

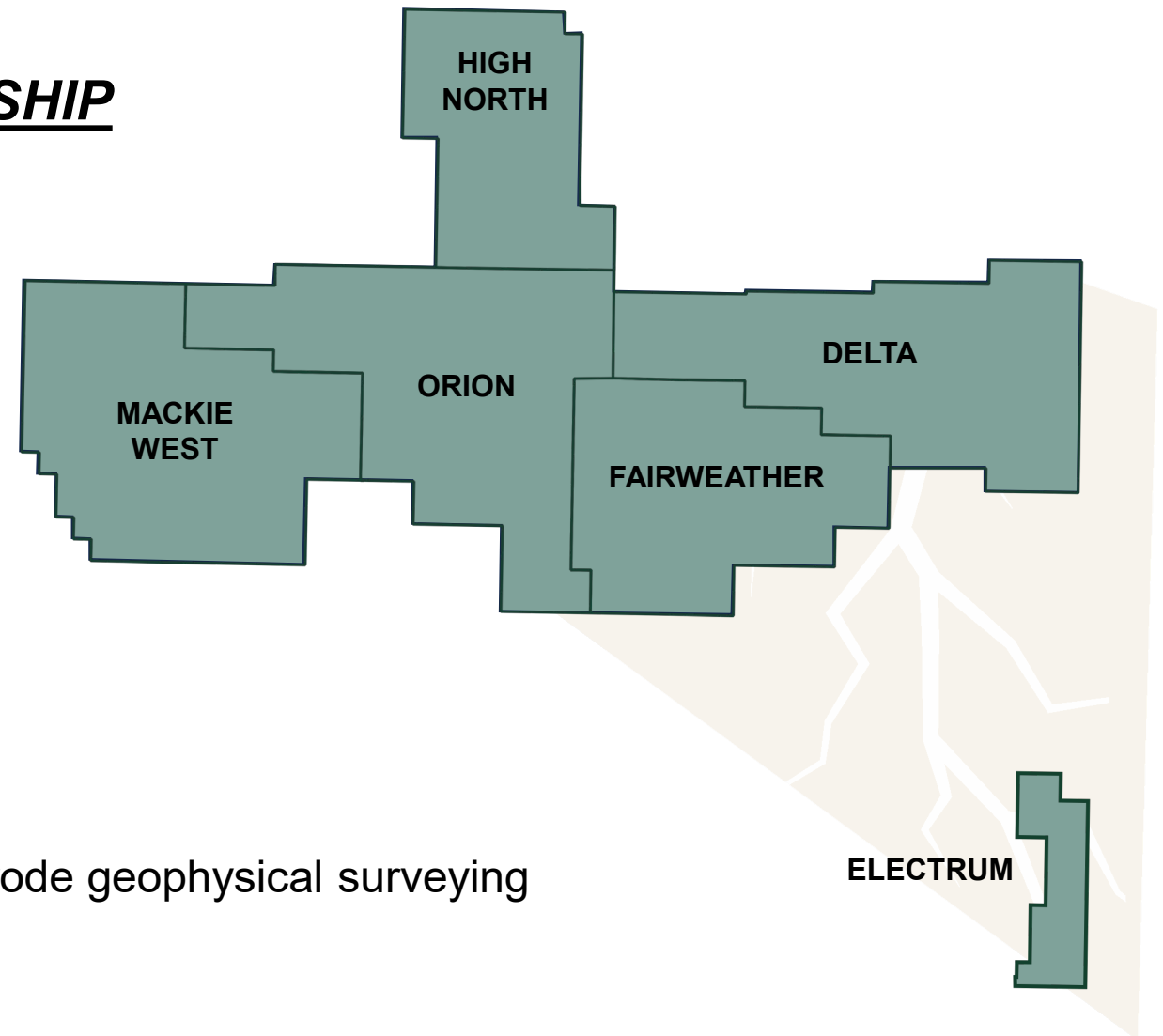
## **Current Exploration Permits:**

### **Electrum**

- 20 drill sites
- 5 trenches
- 1000 tonne bulk sample

### **Remaining Crown Claims**

- 20 drill sites
- 10 trenches or test pits
- 50 line-km of ground based electrode geophysical surveying





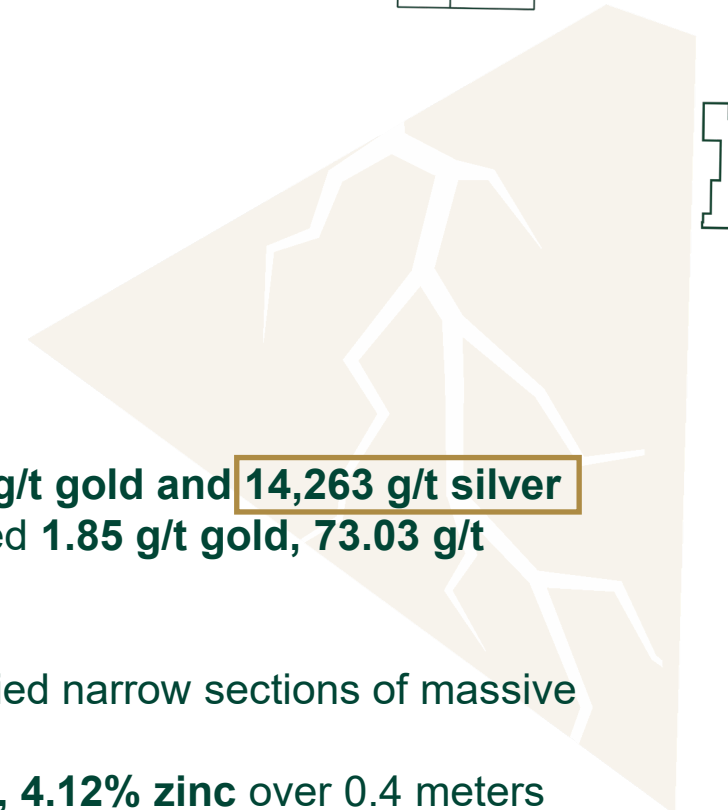
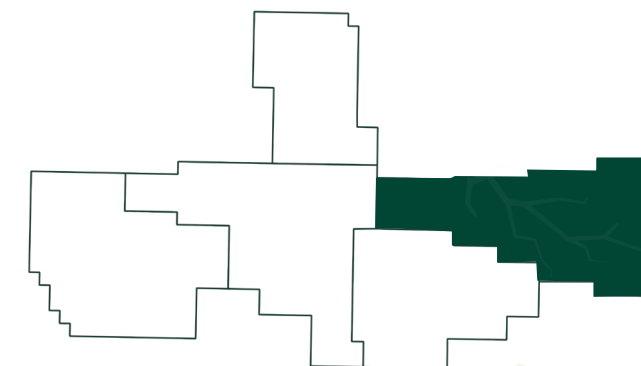
79 <b>Au</b> Gold	47 <b>Ag</b> Silver	82 <b>Pb</b> Lead	30 <b>Zn</b> Zinc
-------------------------	---------------------------	-------------------------	-------------------------

## TARGETS

- ❖ High-grade precious and base metal systems
- ❖ VMS – Eskay Stratigraphy

## HISTORIC RESULTS

- ❖ 1991-92 Soil sampling:
  - Identified a gold-silver-lead-zinc anomaly
- ❖ 2007 Geophysical surveys:
  - Airborne EM, magnetic and radiometric surveys
- ❖ Surface rock sampling:
  - Delta Northwest vein grab sampled assayed **6.14 g/t gold and 14,263 g/t silver**
  - Delta North float sample of quartz-sulphide assayed **1.85 g/t gold, 73.03 g/t silver, 14.41 % lead and 2.77% zinc**
- ❖ 2012 Diamond drill hole program (728.5 meters) identified narrow sections of massive sulphide mineralization:
  - H12-02: **7.18 g/t gold, 243 g/t silver, 7.18 % lead, 4.12% zinc** over 0.4 meters



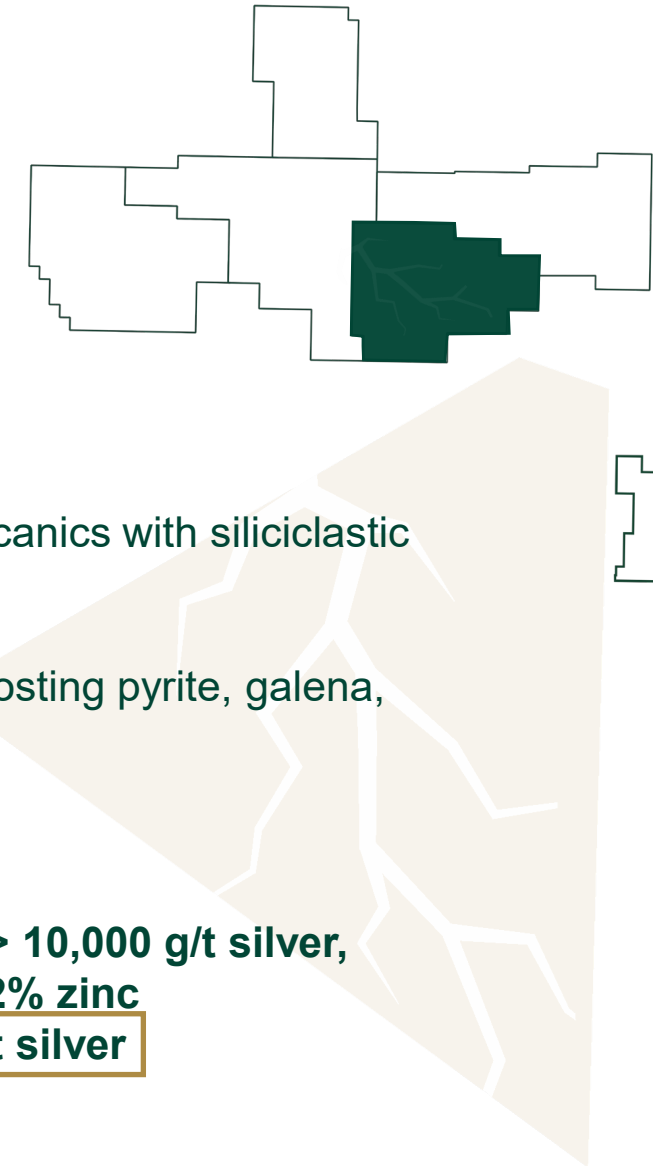
79 <b>Au</b> Gold	47 <b>Ag</b> Silver	82 <b>Pb</b> Lead	30 <b>Zn</b> Zinc	29 <b>Cu</b> Copper
-------------------------	---------------------------	-------------------------	-------------------------	---------------------------

## TARGETS

- ❖ High-grade precious and base metal systems
- ❖ Porphyry and intrusive-related targets
- ❖ VMS – Eskay Stratigraphy

## HISTORIC RESULTS

- ❖ Mapping identified Hazelton Group dacitic and andesitic volcanics with siliciclastic rocks punctuated by fragmented feldspar porphyry bodies
- ❖ Trenching revealed quartz-calcite veins and vein breccias hosting pyrite, galena, sphalerite, tetrahedrite and chalcopyrite:
  - 7.15 meter trench averaged **4.04 g/t gold**
- ❖ Surface grab samples:
  - Three vein grabs assayed **1.3 to 5.1 g/t gold, 32.0 to > 10,000 g/t silver, 0.1 to 3.0 % copper, 0.3 to 30.1% lead, and 0.2 to 5.2% zinc**
  - Quartz vein grab assayed **1.99 g/t gold and 12,950 g/t silver**





## TARGETS

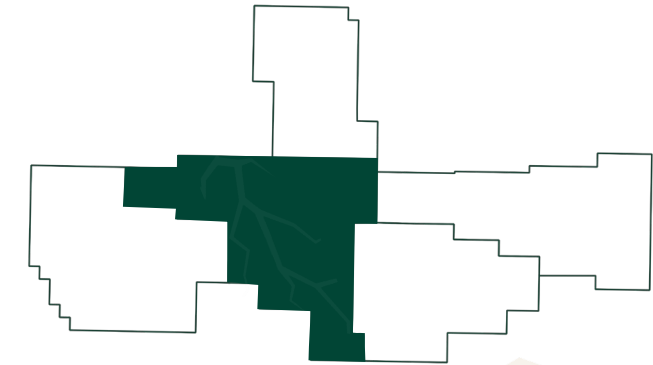
- ❖ High-grade precious and base metal systems
- ❖ Porphyry and intrusive-related targets

## HISTORIC RESULTS

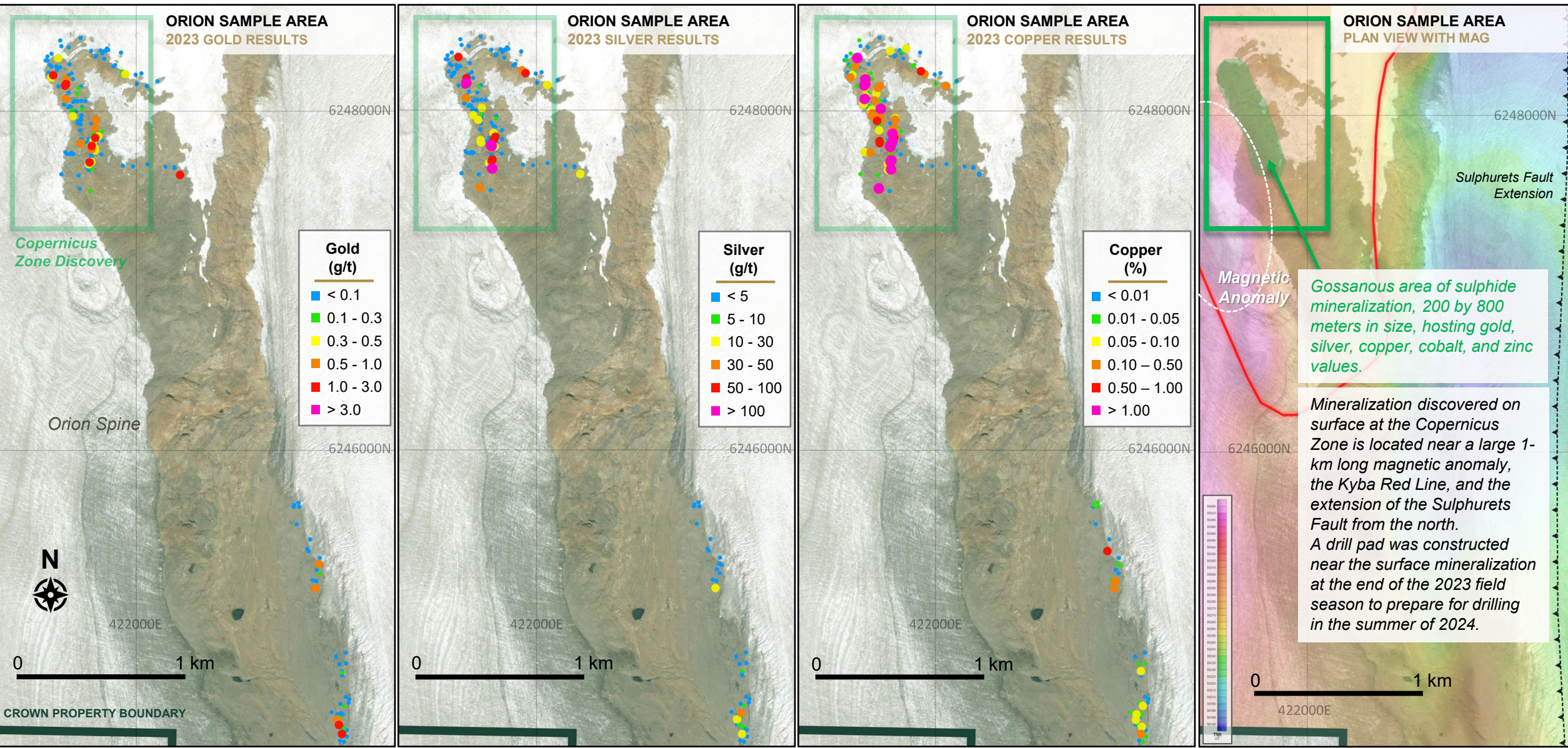
- ❖ 1987-88 Surface sampling:
  - Chip samples across a 30 m by 13 m stockwork zone assayed **25.94 g/t gold**
- ❖ 2016 Geophysics:
  - A magnetotelluric (MT) survey over Orion identified areas of low resistivity which coincide with Stuhini Group rocks and high resistivity areas with Hazelton Group rocks
  - Sharp changes in resistivity profiles indicate a major fault, agreeing with the interpretation of the continuation of the extension of the regional Sulphurets thrust fault
- ❖ 2018 Surface sampling:
  - 0.5m chip sample assayed **31.1 g/t gold and 25.9 g/t silver 0.063% copper**

## 2023 RESULTS

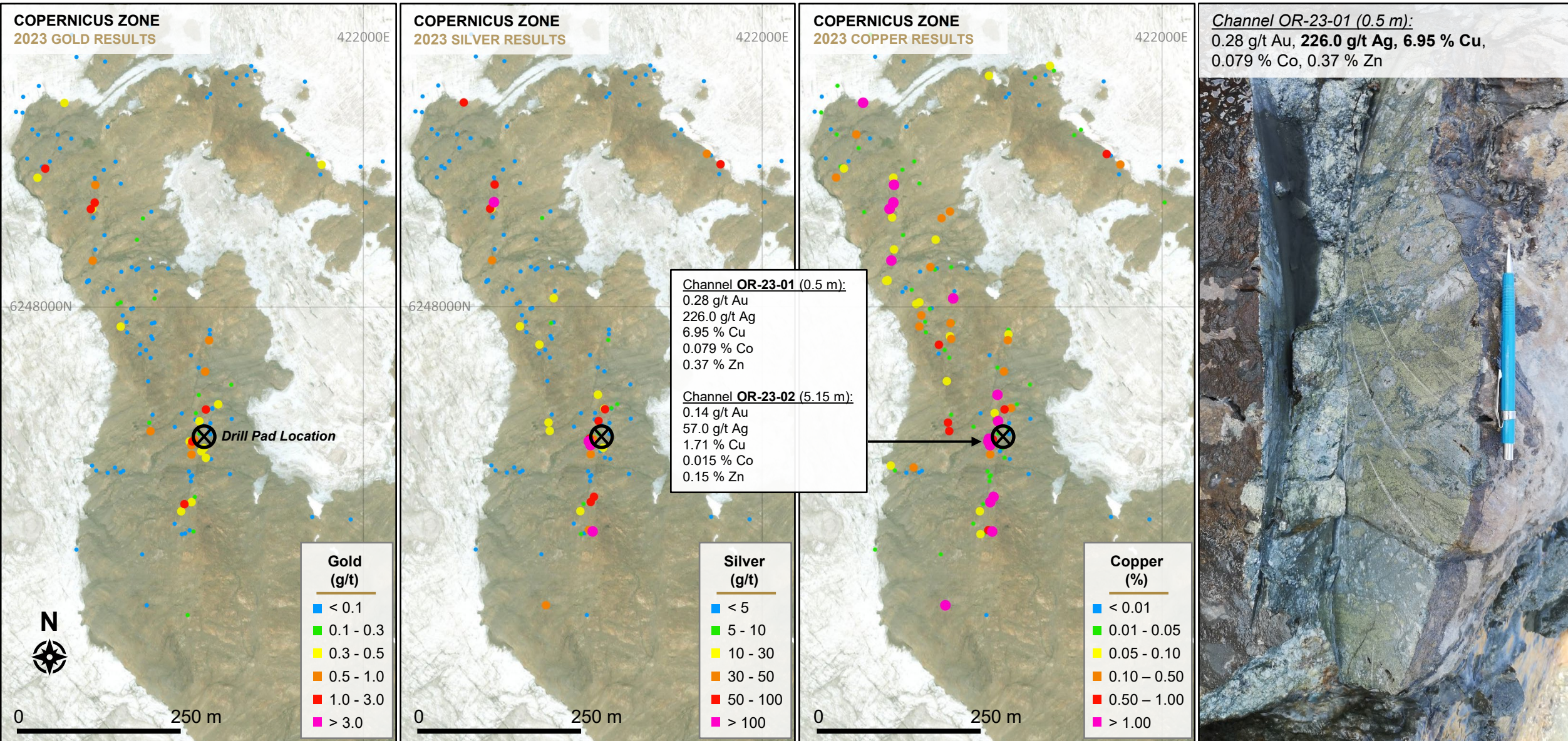
- ❖ High-grade copper-silver-gold “**Copernicus**” zone discovered at northern Orion Spine.



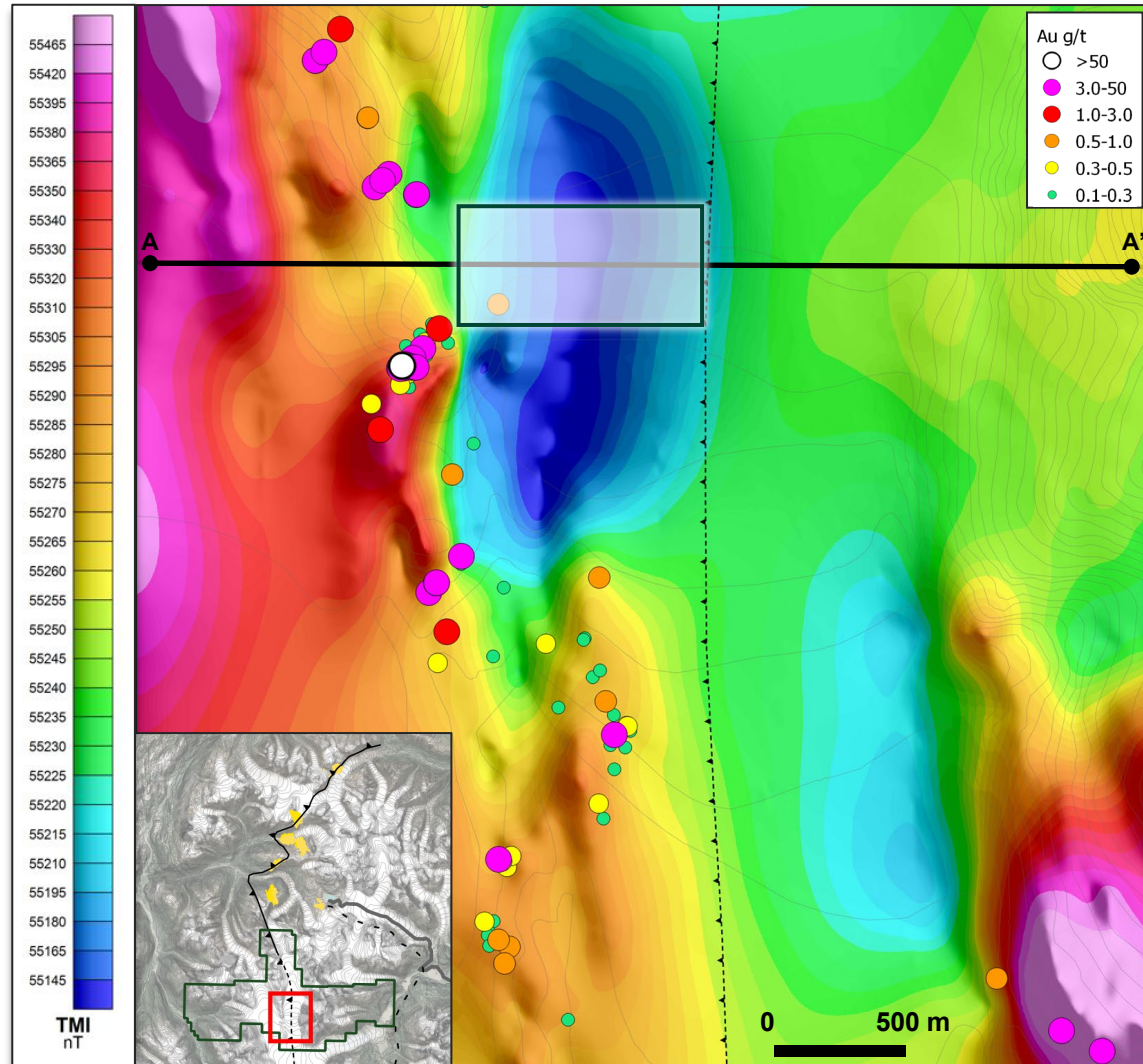
# Crown Project - North Orion Zone Surface Sampling



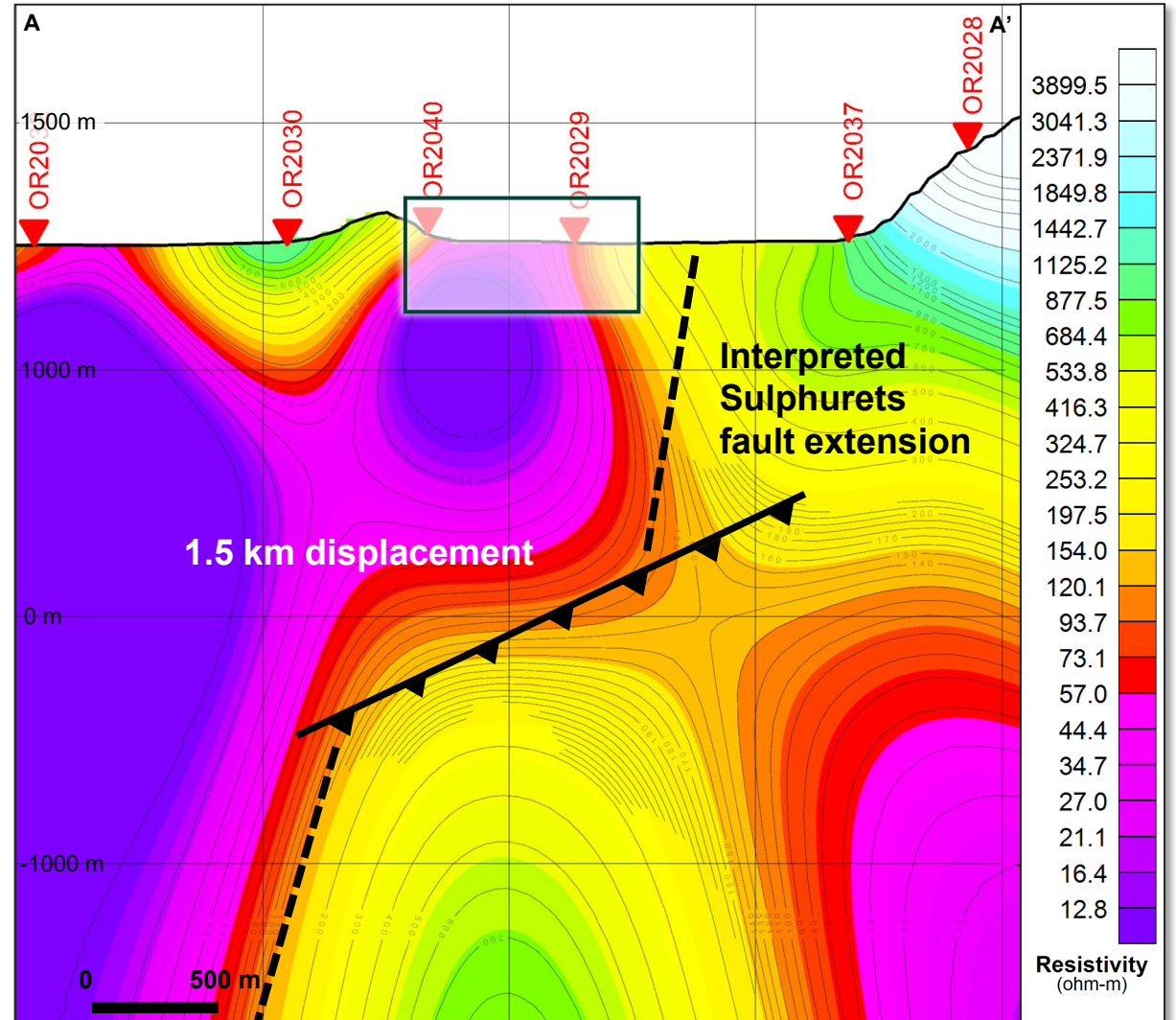
# Crown Project - Copernicus Sample Results



## 2022 Total Magnetic Intensity (TMI) Planview:



## 2016 Magnetotelluric (MT) Cross Section (A-A'):



Central magnetic low at Orion Zone overlaps with a 2016 MT resistivity anomaly, all adjacent to high-grade historic samples and the interpreted Sulphurets fault extension

79 <b>Au</b> Gold	47 <b>Ag</b> Silver	82 <b>Pb</b> Lead	30 <b>Zn</b> Zinc
-------------------------	---------------------------	-------------------------	-------------------------

## TARGETS

- ❖ High-grade precious and base metal systems
- ❖ Porphyry and intrusive-related targets
- ❖ VMS – Eskay Stratigraphy

## HISTORIC RESULTS & GEOLOGY

- ❖ Mapping in the 1980s and 90s revealed favourable Hazelton Group volcanics in contact with a large intrusive body
- ❖ Westernmost claims are underlain by the Eskay Rift, which hosts the historic volcanogenic massive sulphide Eskay Creek Deposit (Skeena Resources), 25 km to the north



79 <b>Au</b> Gold	47 <b>Ag</b> Silver	82 <b>Pb</b> Lead	30 <b>Zn</b> Zinc	29 <b>Cu</b> Copper
-------------------------	---------------------------	-------------------------	-------------------------	---------------------------

## TARGETS

- ❖ High-grade precious and base metal systems
- ❖ Porphyry and intrusive-related targets

## GEOLOGY

- ❖ Stuhini (upper Triassic) volcanic and sedimentary rocks
- ❖ Large scale regional faulting (Sulphurets thrust fault) through the center of the zone
- ❖ Lithology is largely inferred from surrounding areas and has been historically covered by ice
- ❖ Recent ablation of the ice has exposed gossanous regions of broad alteration





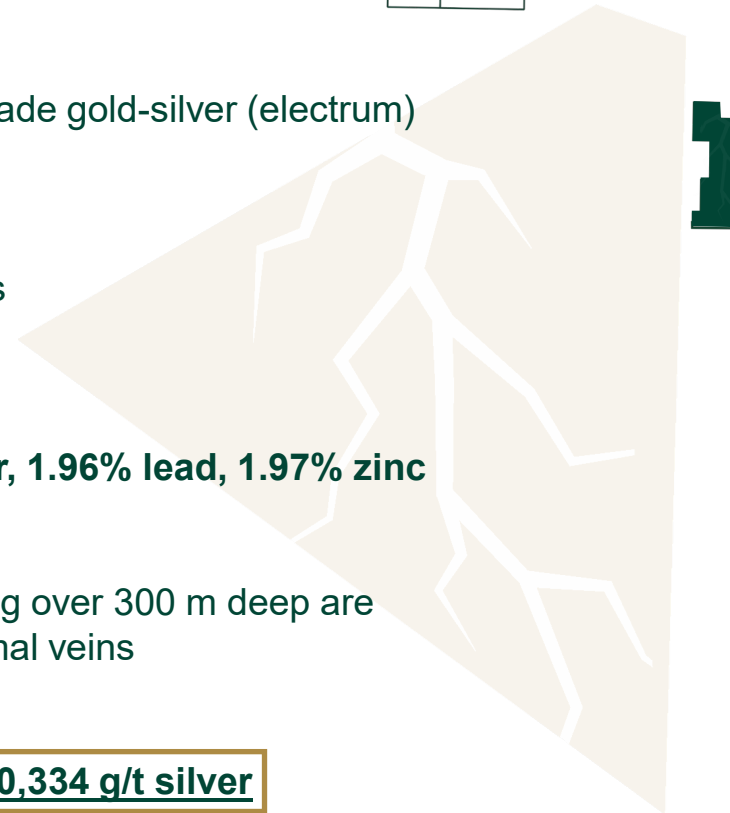
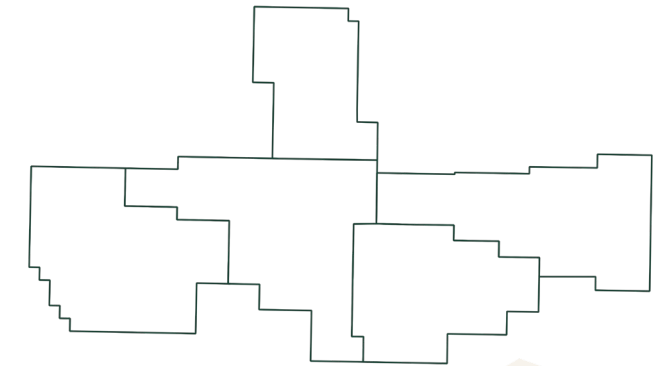
79 <b>Au</b> Gold	47 <b>Ag</b> Silver	82 <b>Pb</b> Lead	30 <b>Zn</b> Zinc
-------------------------	---------------------------	-------------------------	-------------------------

## TARGETS

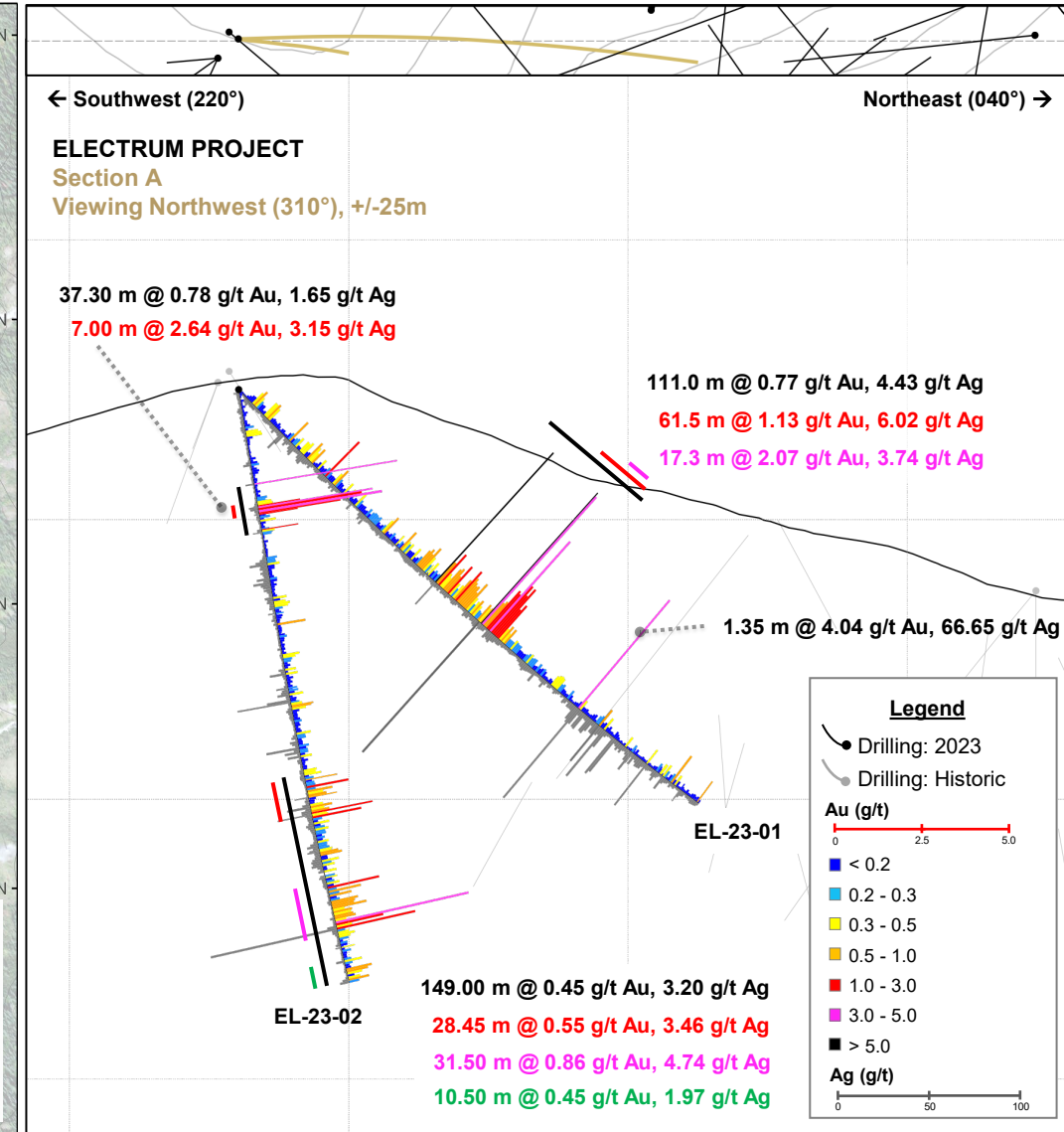
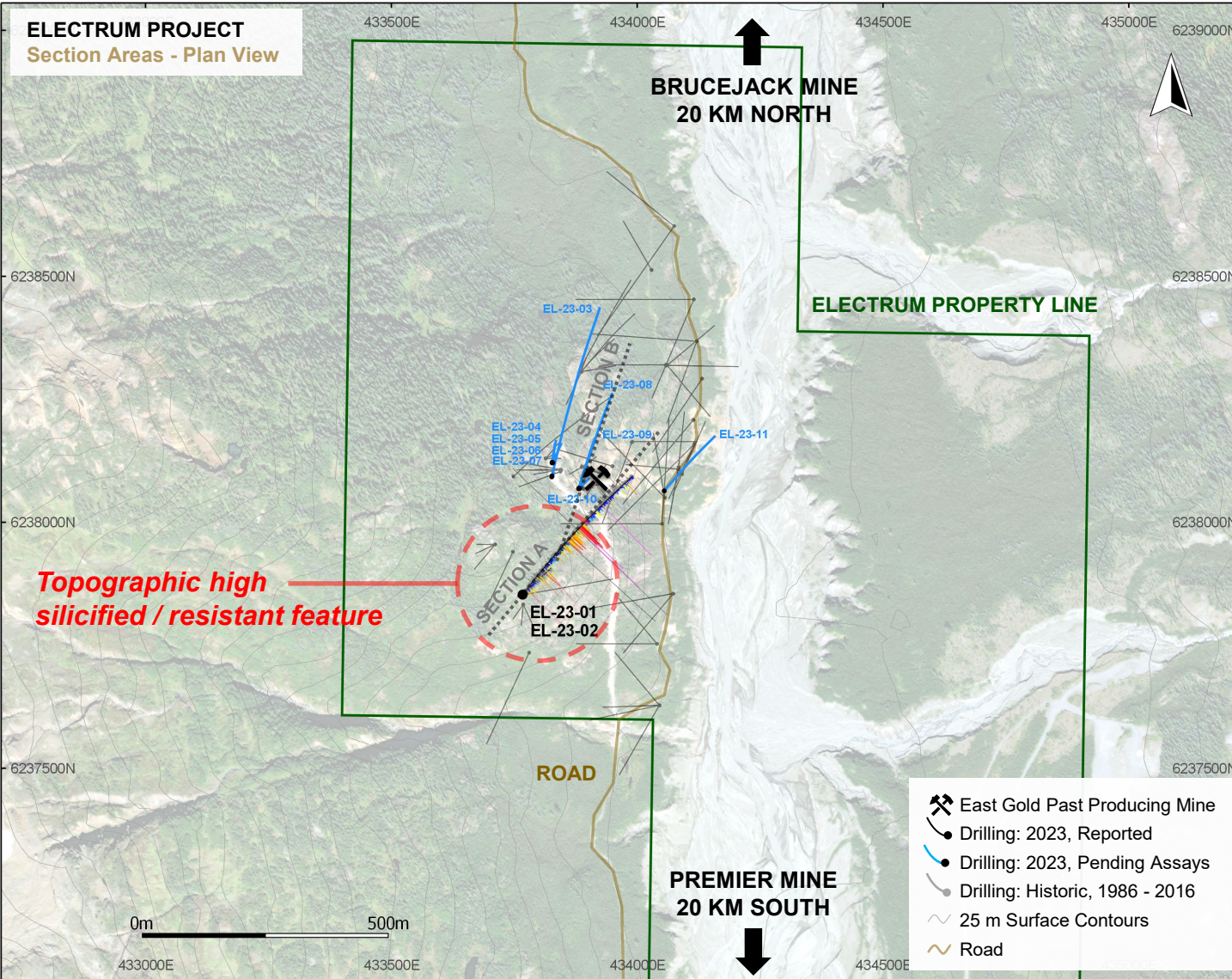
- ❖ High-grade precious and base metal epithermal veins
- ❖ Porphyry and intrusive-related disseminated veinlet systems

## HISTORIC RESULTS

- ❖ Historic, small-scale mining at the East Gold mine along high grade gold-silver (electrum) bearing veins on the southeastern part of the property
- ❖ 2006 -07 Diamond drill hole highlights:
  - EL06-18: **440.78 g/t gold, 400.0 g/t silver** over 0.5 meters
  - EL07-31: **31.40 g/t gold, 19.00 g/t silver** over 2.0 meters
- ❖ 2016 Bulk sample:
  - 3.8 tonne, 5-meter-wide zone: **2.82 g/t gold, 539 g/t silver, 1.96% lead, 1.97% zinc**
- ❖ 2018 Geophysics:
  - 5 line-km IP survey indicated strong chargeability extending over 300 m deep are interpreted to be faults potentially associated with epithermal veins
- ❖ 2020 Surface Sampling:
  - Verification samples returned up to **101.60 g/t gold, and 20,334 g/t silver**



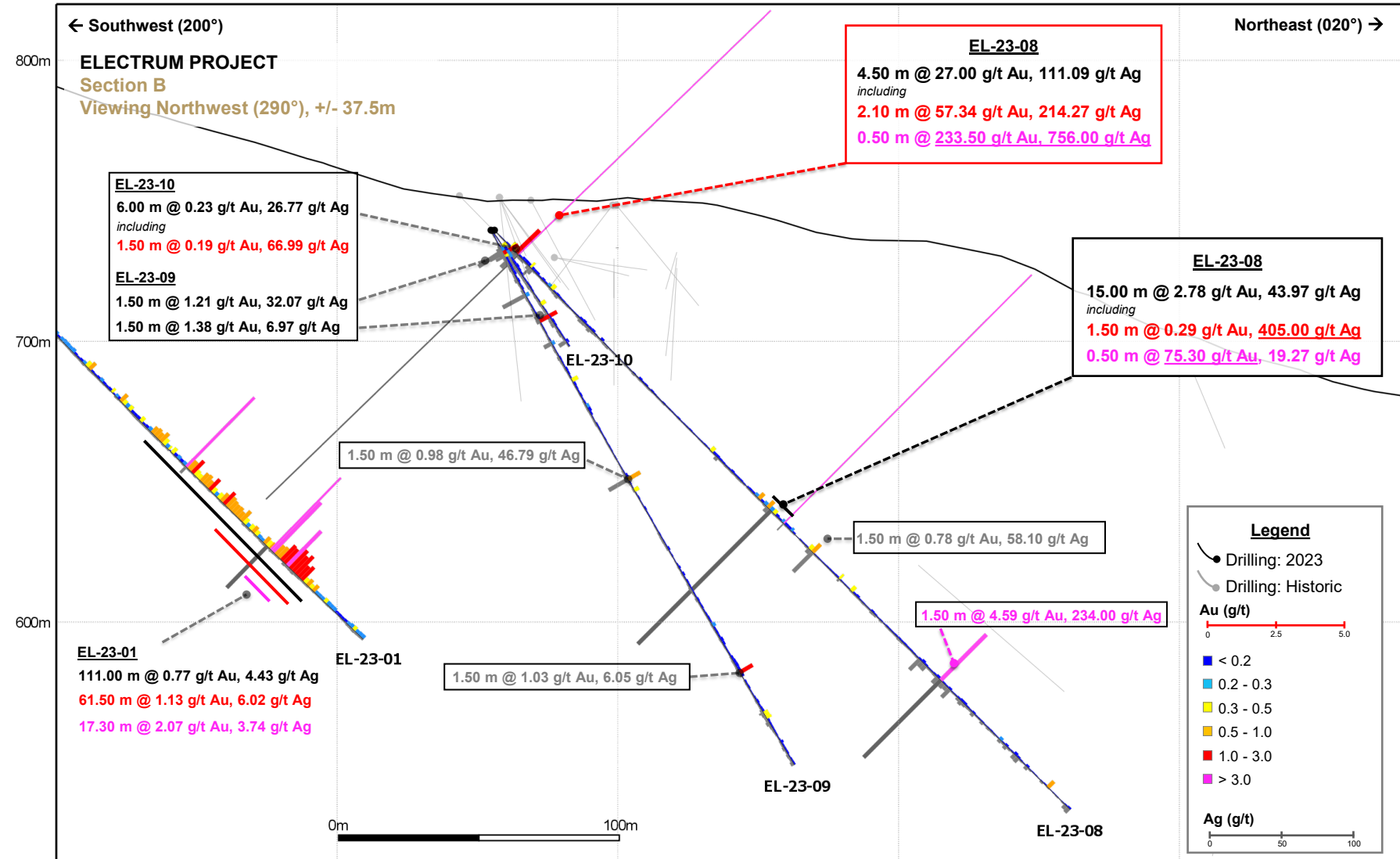
# Crown Project - Electrum 2023 Drilling



# Crown Project - Electrum 2023 Drilling



VISIBLE GOLD from drillhole EL-23-08 @ 146.85 m depth.  
75.20 g/t Au over 0.50 m



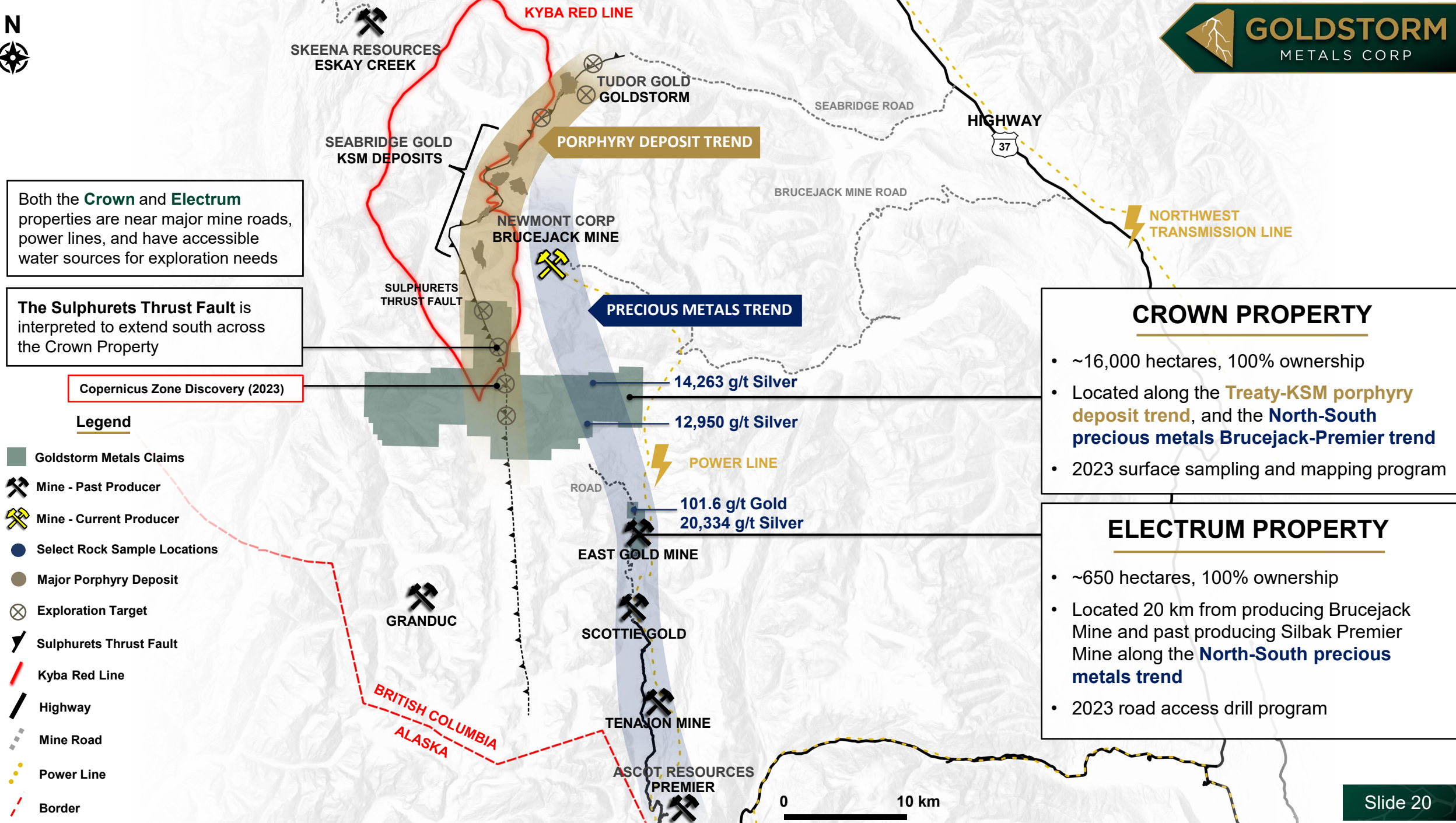
x: 433832  
y: 6237921

x: 433866  
y: 6238015

x: 433900  
y: 6238109

x: 433935  
y: 6238203

x: 433969  
y: 6238297



Both the **Crown** and **Electrum** properties are near major mine roads, power lines, and have accessible water sources for exploration needs

The **Sulphurets Thrust Fault** is interpreted to extend south across the Crown Property

Copernicus Zone Discovery (2023)

**Legend**

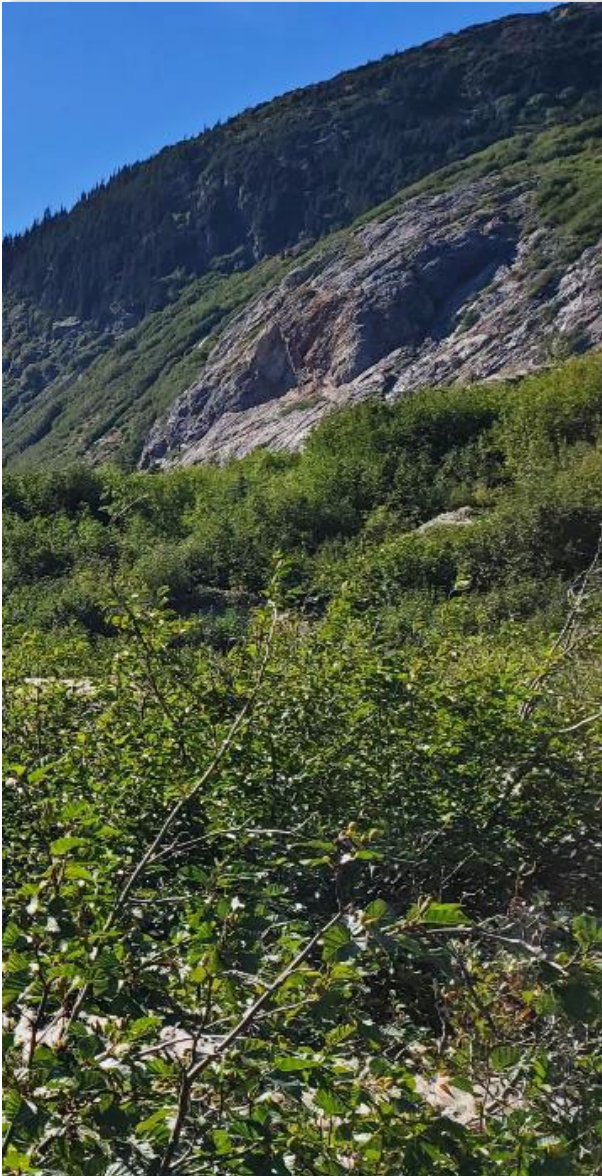
- Goldstorm Metals Claims
- Mine - Past Producer
- Mine - Current Producer
- Select Rock Sample Locations
- Major Porphyry Deposit
- Exploration Target
- Sulphurets Thrust Fault
- Kyba Red Line
- Highway
- Mine Road
- Power Line
- Border

**CROWN PROPERTY**

- ~16,000 hectares, 100% ownership
- Located along the **Treaty-KSM porphyry deposit trend**, and the **North-South precious metals Brucejack-Premier trend**
- 2023 surface sampling and mapping program

**ELECTRUM PROPERTY**

- ~650 hectares, 100% ownership
- Located 20 km from producing Brucejack Mine and past producing Silbak Premier Mine along the **North-South precious metals trend**
- 2023 road access drill program



- ▶ Crown Property has the **right geology**; located in one of the most prospective mineral belts in North America; includes:
  - Brucejack Mine (Newmont Mining)
  - KSM Deposits (Seabridge Gold)
  - Goldstorm Deposit @ Treaty Creek (Tudor Gold)
- ▶ **Aggressive exploration program** in 2023 to delineate mineralized targets for drill testing
  - Potential for high-grade, VMS and Porphyry style mineralization
- ▶ **Top management team** with track record of making discoveries in the Golden Triangle:
  - ~ 70 million gold ounces drilled-off in the Golden Triangle
- ▶ **Significant Value Re-rating Potential** in a geopolitically safe economic jurisdiction



# GOLDSTORM

METALS CORP

THE RIGHT GEOLOGY

THE RIGHT DISTRICT

THE RIGHT TEAM



# GOLDSTORM

METALS CORP

## A NEW PRECIOUS METALS EXPLORER IN BRITISH COLUMBIA'S GOLDEN TRIANGLE

**For more information, please contact:**

**Chris Curran**

Head of Corporate Development

**T: +1 604 559 8092**

**E: [chris.curran@goldstormmetals.com](mailto:chris.curran@goldstormmetals.com)**

TSX.V: GSTM | OTC: GSTMF | FRA: B2U

